



# VISTA avalon

Imagine waking up every morning in the tropical paradise of Punta Cana, surrounded by lush nature and minimalist avant-garde architecture.



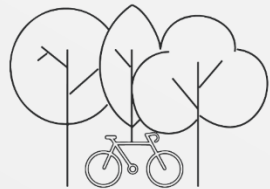
Terrace with beautiful views of Punta Cana



The project includes a shopping center in the immediate vicinity of the complex with various services and recreational facilities



You can enhance your property with private amenities



Live in a garden residential complex, a total oasis in the middle of the city.



Exclusive access to the Avalon Beach Club.



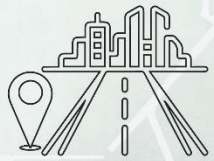
Strategic location, a few minutes from hospitals, tourist parks and stores



The complex has a variety of amenities for your enjoyment



MINUTES AWAY FROM  
DOWNTOWN, MALL AND  
RECREATIONAL  
AREASEASY ACCESS TO  
MAIN ROADS



EXCELLENT  
LOCATION OF  
SERVICESNEARBY  
HOSPITALSGROWING  
AREA

FUTURE VISTACANA  
CONTROL ACCESS

IMG HOSPITAL  
IN PUNTA CANA



BAVARO TOURIST  
BUSINESS PARK

CARRERA HIGUEY MICHES

HELIDOSA HELICOPTER  
EXCURSION

AVALON SRL  
AVALON OFFICE

VISTACANA

BÁVARO BEACH

DOWNTOWN  
PUNTA CANA





AS PART OF VISTA AVALON, YOU WILL HAVE ACCESS TO THE EXCLUSIVE AVALON BEACH CLUB



AVALON BEACH CLUB WILL HAVE RESTAURANTS, PLAYGROUND, PADDLE TENNIS COURT, SKY BAR, INFINITY POOL WHERE YOU CAN CONTEMPLATE THE MOST BEAUTIFUL VIEWS OF MACAO BEACH AND MUCH MORE



avalon

AVALON AVALON AVALON AVALON AVALON AVALON AVALON AVALON AVALON AVALON



JUST A FEW STEPS FROM YOUR HOME, A SHOPPING MALL THAT OFFERS EVERYTHING YOU NEED FOR YOUR DAILY LIFE: FROM CAFES AND RESTAURANTS TO BANKS AND PHARMACIES. AVALON MALL SHOPPING CENTER



THE CONVENIENCE OF HAVING EVERYTHING YOU NEED AT YOUR FINGERTIPS WITHOUT HAVING TO TRAVEL LONG DISTANCES IS JUST ONE OF THE MANY BENEFITS OFFERED BY THIS TYPE OF DEVELOPMENT, ANOTHER IS THE INTEGRATION OF NATURE, ARCHITECTURE AND PRACTICALITY TO OFFER YOU A BETTER LIFESTYLE.







PADDLE COURT



PLAYGROUND



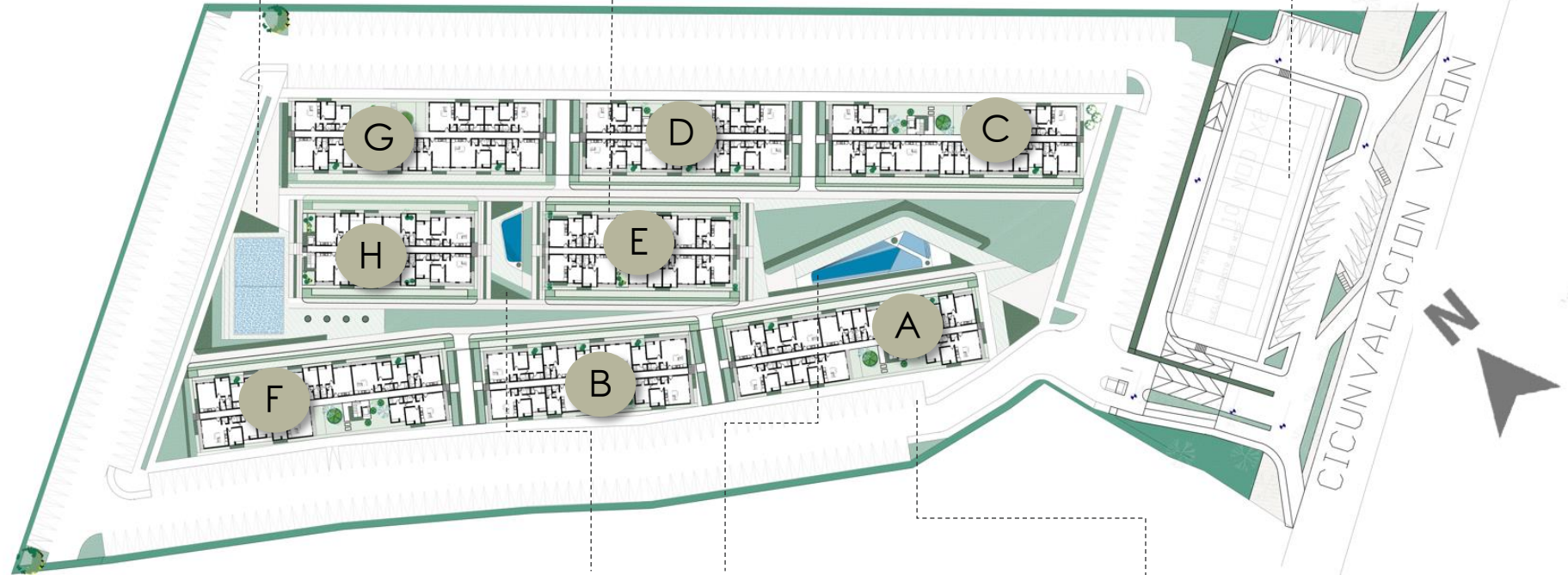
AVALON MALL

# MASTER PHASE 1

THE VISTA AVALON MASTER PLAN HAS 8 TOWERS WITH A FOCUS ON THE CENTER WHERE THE AMENITIES ARE LOCATED.

PHASE 1 WILL DEVELOP 8 TOWERS AND THE MAIN AMENITIES.

SELECT THE TOWER LOCATION AND DECIDE THE APARTMENT OF YOUR PREFERENCE.



ADULT AND CHILDREN'S SWIMMING POOL WITH BBQ

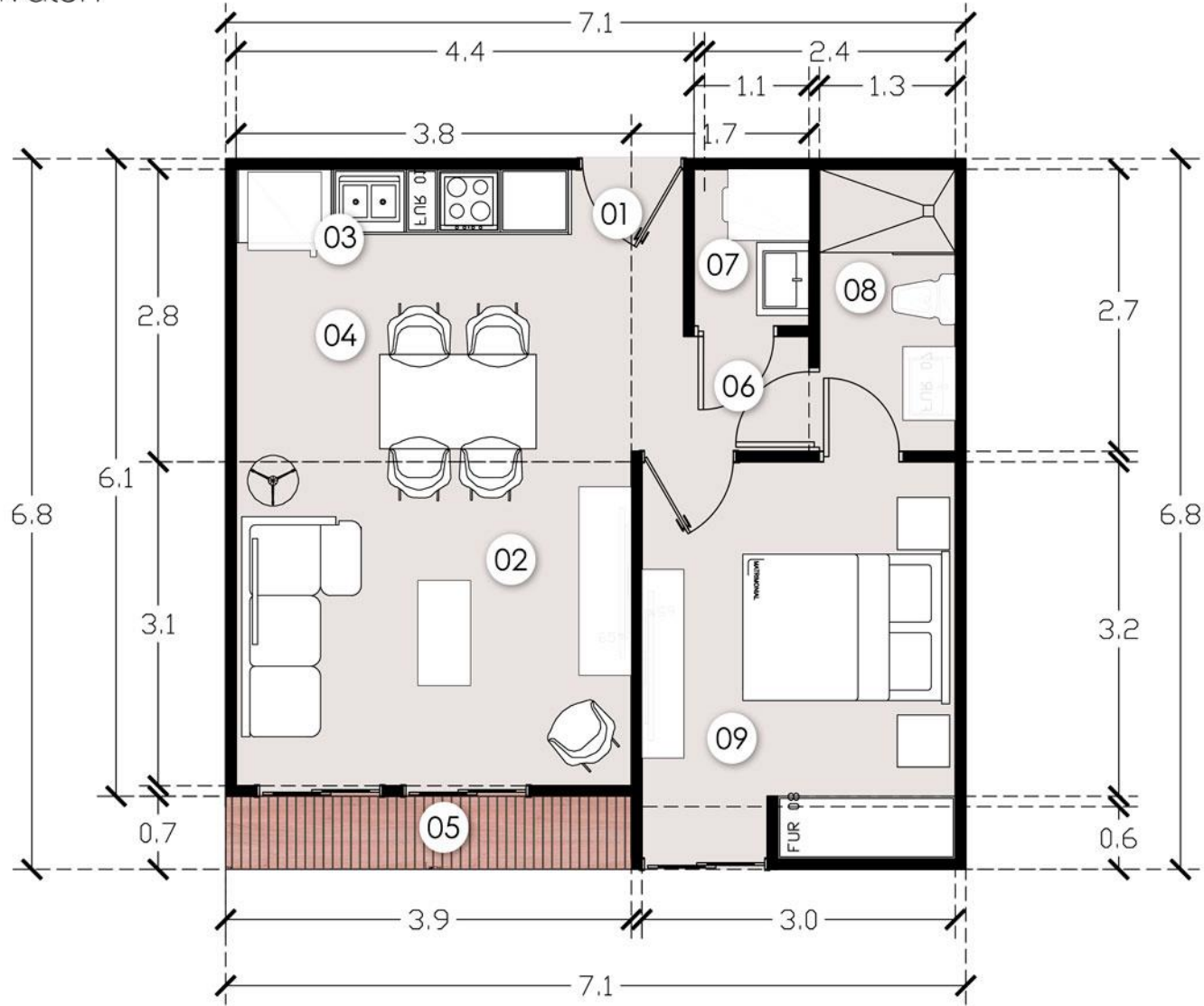
ACCESS





APARTMENT  
1 BEDROOM  
TYPE A





**AREA PROGRAM**

INTERNAL AREA 45.44 MTS<sup>2</sup>  
TOTAL AREA 48.16 MTS<sup>2</sup>

01 ACCESS

02 LIVING ROOM

03 KITCHEN- DINNING AREA

05 BALCONY

9.40 MTS<sup>2</sup>

10.59 MTS<sup>2</sup>

2.71 MTS<sup>2</sup>

06 DISTRIBUTOR HALLWAY

07 LAUNDRY AREA

08 BATHROOM

09 BEDROOM

1.82 MTS<sup>2</sup>

1.73 MTS<sup>2</sup>

3.51 MTS<sup>2</sup>

11.40 MTS<sup>2</sup>





APARTMENT  
1 BEDROOM  
TYPE B



DINING HALL



HALL



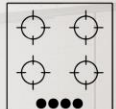
BEDROOM



BALCONY



BATHROOM

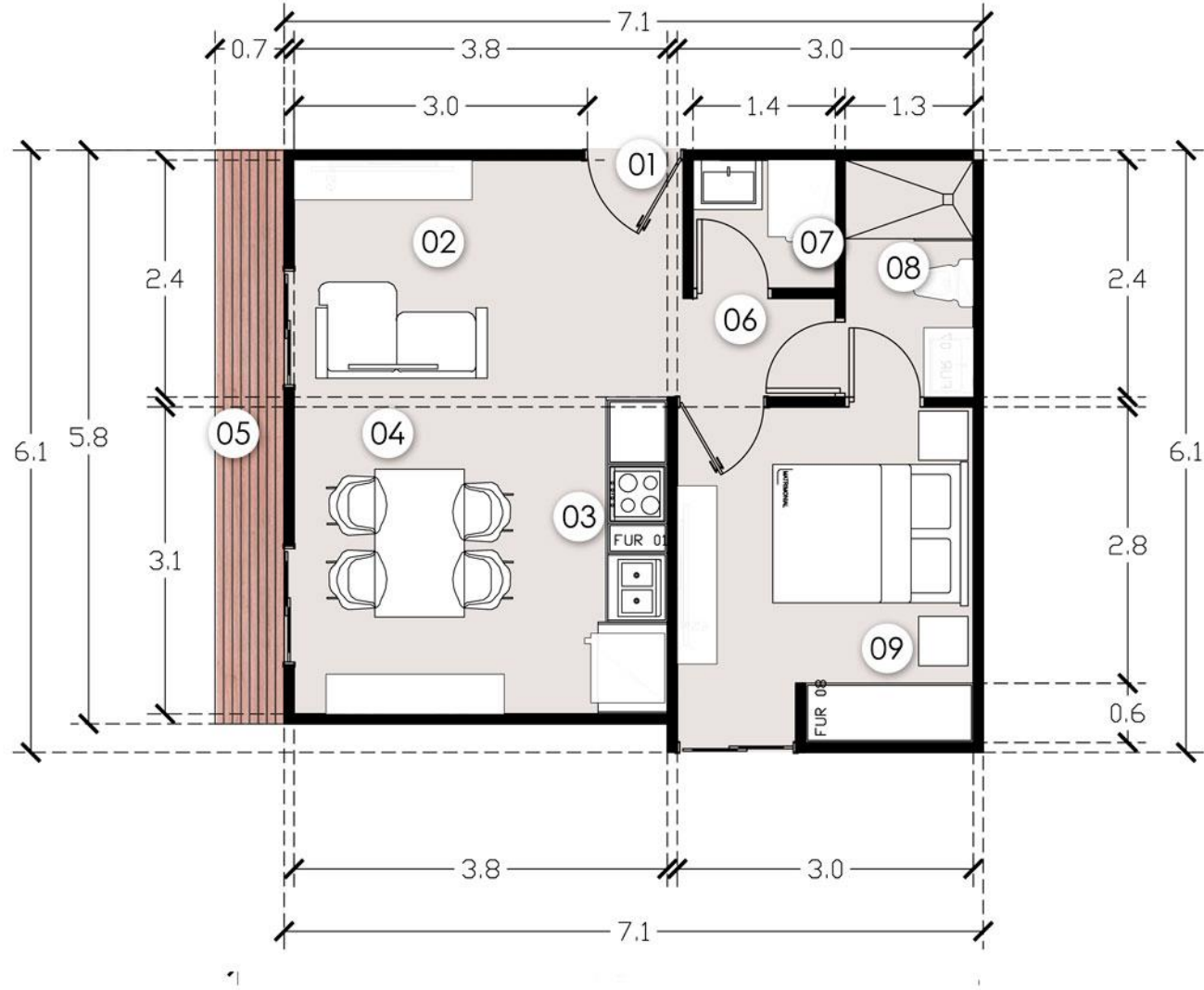


KITCHEN



LOUNDRY AREA





**AREA PROGRAM**

INTERNAL AREA 42.08 MT<sup>2</sup>  
TOTAL AREA 46.14 MTS

01 ACCESS		06 DISTRIBUTOR HALLWAY	2.40 MTS <sup>2</sup>
02 LIVING ROOM	6.53 MTS <sup>2</sup>	07 LAUNDRY AREA	1.18 MTS <sup>2</sup>
03 KITCHEN		08 BATHROOM	3.12 MTS <sup>2</sup>
04 DINNING AREA	12.14 MTS <sup>2</sup>	09 BEDROOM	10.50 MTS <sup>2</sup>
05 BALCONY	4.06 MT <sup>2</sup>		



VISTA  
avalon



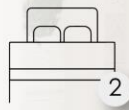
APARTMENT  
2 BEDROOM  
TYPE A



DINING HALL



HALL



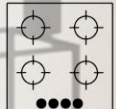
BEDROOM



BALCONY



BATHROOM



KITCHEN



LOUNDRY AREA







## APARTMENT 2 BEDROOM TYPE B



DINING HALL



HALL



BEDROOM



BALCONY



BATHROOM



KITCHEN



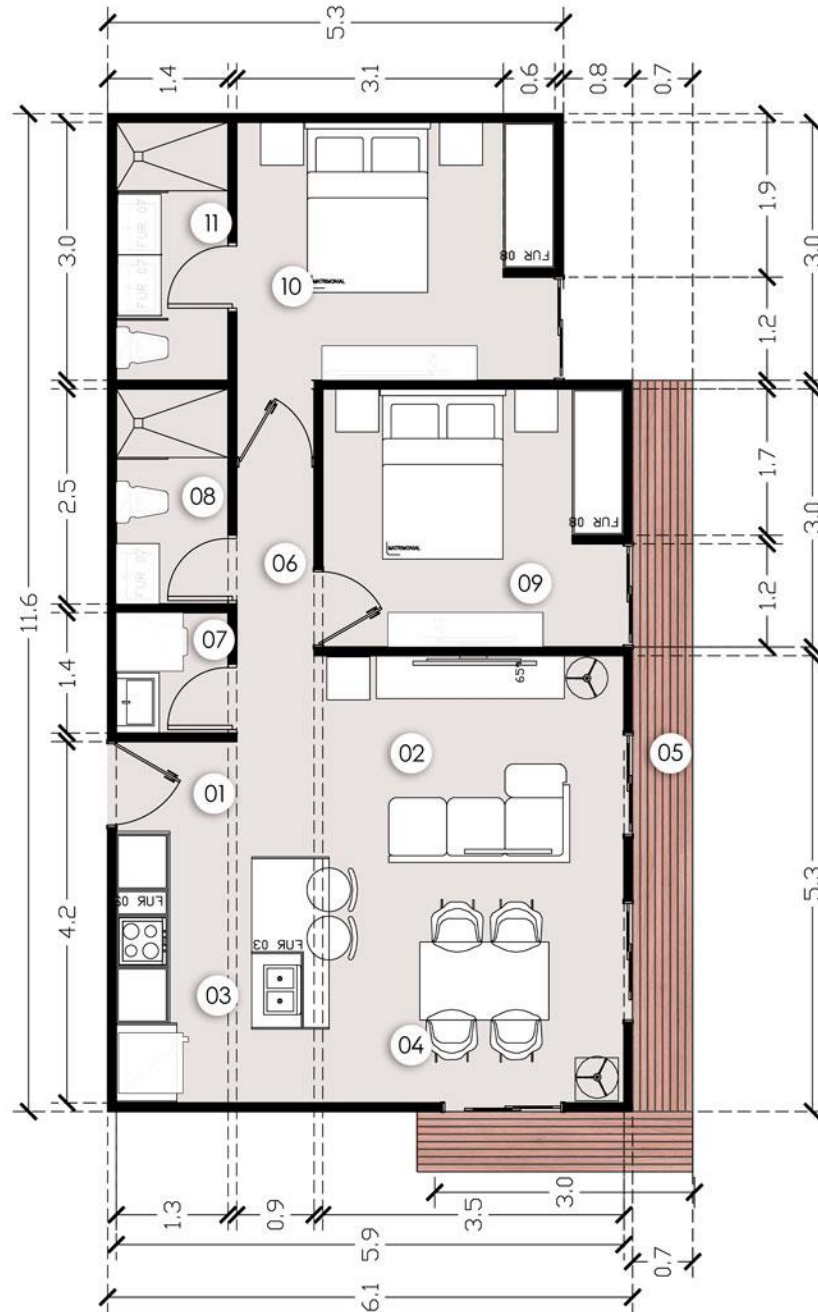
LOUNDRY AREA



## AREA PROGRAM

INTERNAL AREA 68.30 MTS<sup>2</sup>  
TOTAL AREA 76.49 MTS<sup>2</sup>

- 01 ACCESS
- 02 LIVING ROOM  
8.24 MTS<sup>2</sup>
- 03 KITCHEN-DINING ROOM  
10.39 MTS<sup>2</sup>
- 04 DINNING AREA  
9.58 M<sup>2</sup>
- 05 BALCONY  
8.19 MTS<sup>2</sup>
- 06 DISTRIBUTOR HALLWAY  
2.79 MTS<sup>2</sup>
- 07 LAUNDRY AREA  
1.82 MTS<sup>2</sup>
- 08 BATHROOM  
3.25 MTS<sup>2</sup>
- 09 SECOND BEDROOM  
10.50 MTS<sup>2</sup>
- 10 MASTER BEDROOM  
11.90 MTS<sup>2</sup>
- 11 PRIVATE BATHROOM  
3.90 MTS<sup>2</sup>





VISTA  
avalon



## APARTMENT 2 BEDROOM TYPE C



DINING HALL



HALL



BEDROOM



BALCONY



BATHROOM



KITCHEN



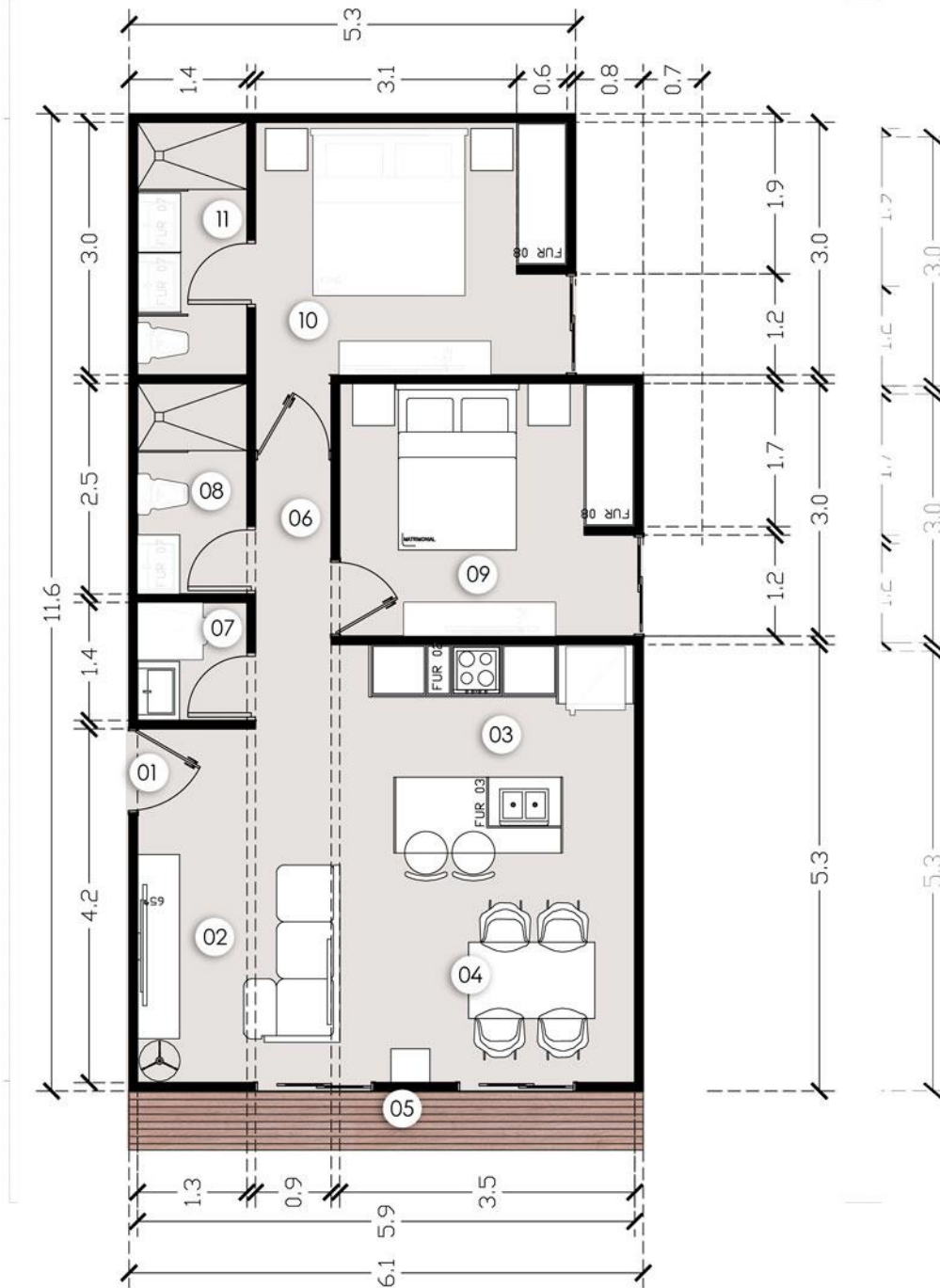
LAUNDRY AREA



## AREA PROGRAM

INTERNAL AREA 68.30MTS<sup>2</sup>  
TOTAL AREA 72.57 MTS<sup>2</sup>

- 01 ACCESS
- 02 HALL  
10.09 MTS<sup>2</sup>
- 03 KITCHEN-DINING ROOM  
10.03 MTS<sup>2</sup>
- 04 DINING HALL  
8.16 MT<sup>2</sup>
- 05 BALCONY  
4.27 MTS<sup>2</sup>
- 06 DISTRIBUTOR HALLWAY  
2.79 MTS<sup>2</sup>
- 07 LAUNDRY AREA  
1.82 MTS<sup>2</sup>
- 08 BATHROOM  
3.25 MTS<sup>2</sup>
- 09 SECOND BEDROOM  
10.50 MTS<sup>2</sup>
- 10 MASTER BEDROOM  
11.90 MTS<sup>2</sup>
- 11 PRIVATE BATHROOM  
3.90 MTS<sup>2</sup>







# VISTA avalon

IF YOU ARE LOOKING FOR  
A LIVING EXPERIENCE FULL OF  
COMFORTS, WE HAVE  
CREATED THIS FOR YOU.



OUTDOOR GYM



CHILDREN AND ADULT SWIMMING POOLS



CHILDREN'S PLAYGROUND



PADDLE COURT

PERFECT FOR ANYONE  
LOOKING FOR AN ACTIVE  
AND HEALTHY LIFESTYLE.

DON'T MISS THE OPPORTUNITY  
TO LIVE IN THIS TROPICAL  
PARADISE FULL OF AMENITIES  
AND FUN!





WITH A SECURE CHILDREN'S PLAYGROUND, SEVERAL SWIMMING POOLS, A PADDLE TENNIS COURT TO ENJOY WITH FRIENDS, A 410-METER RUNNING TRACK SURROUNDED BY LUSH NATURE AND AN OUTDOOR GYM.





VISTA  
avalon







VISTA  
avalon

IF YOU ALREADY ENJOY THE  
COMFORT AND PRIVACY OF  
YOUR APARTMENT, WHY NOT TAKE  
IT TO THE NEXT LEVEL?

## ADD YOUR OWN JACUZZI

WITH THE POSSIBILITY OF BUYING  
EXTRA METERS OF TERRACE AND  
AN INTEGRATED JACUZZI, YOU  
WILL BE ABLE TO ENJOY YOUR  
HOME IN A WHOLE NEW WAY.

THE EXTENSION OF YOUR TERRACE  
WILL ALLOW YOU TO HAVE MORE  
SPACE TO ENJOY THE OUTDOORS  
AND CREATE A COZY  
ATMOSPHERE TO SHARE WITH  
FRIENDS AND FAMILY.

AVAILABLE FOR FIRST FLOOR  
APARTMENTS.

OPTIONAL UPGRADE  
\$14.500,00 USD



When you purchase one of the top floor apartments in the Vista Avalon complex, not only will you enjoy the breathtaking views of the city, but you will also have access to a shared open terrace to enjoy extra space and share with your neighbors.

This common area is the perfect place to enjoy an outdoor barbecue, sunbathe or simply relax while admiring the natural beauty of the surroundings.

Don't miss the opportunity to live life on top and experience all that this residential complex has to offer!





# VISTA avalon

RESERVE WITH

\$1000,00 USD

No refund of reservation

PAYMENT PLAN 1

20% Signing of the contract

40% Construction process

40% With delivery

PAYMENT PLAN 2

10% Signing of the contract

50% Construction process

40% With delivery

Delivery: December 2026 | 44 months

